

NOTE: DO NOT DISCARD the Parts List from the Instruction Bulletin. Place the Parts List in the appropriate place in the machine manual for future reference. Retaining the Parts List will make it easier to reorder individual parts and will save the cost of ordering an entire kit.

NOTE: Numbers in parenthesis () are reference numbers for parts listed in Bill of Materials.

Installation instructions for kit number 367557

SYNOPSIS:

This kit contains the parts needed to install a Vac Wand Kit on ATLV 4300 machines. Please follow step-by-step instructions.

SPECIAL TOOLS / CONSIDERATIONS: None

(Estimated time to complete: 3 hours)

PREPARATION:

1. Park the machine on a clean level surface, turn off the machine, remove the key, and set the parking brake.

FOR SAFETY: Before leaving or servicing machine, stop on level surface, set parking brake, turn off machine, and remove key.

2. Drill two mount holes into the right side panel. Refer to Fig. 1 for dimensions

NOTE: Early machines need to have the hopper cover reworked. Later machines equipped with newer hopper covers already have vacuum wand mount holes.

3. Drill the mount holes and cut the access hole into the hopper cover. Refer to Fig. 2 for dimensions.

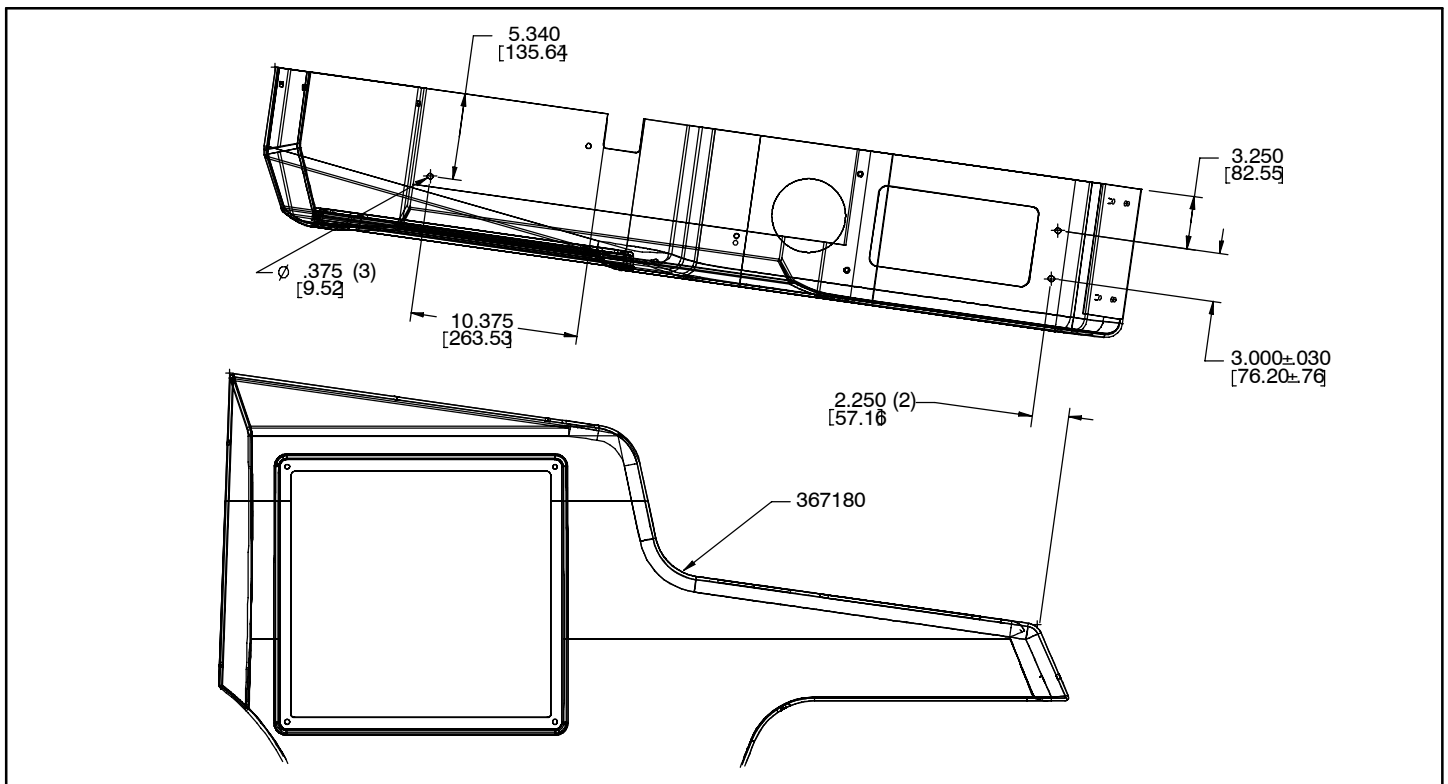


FIG. 1 - PANEL REWORK

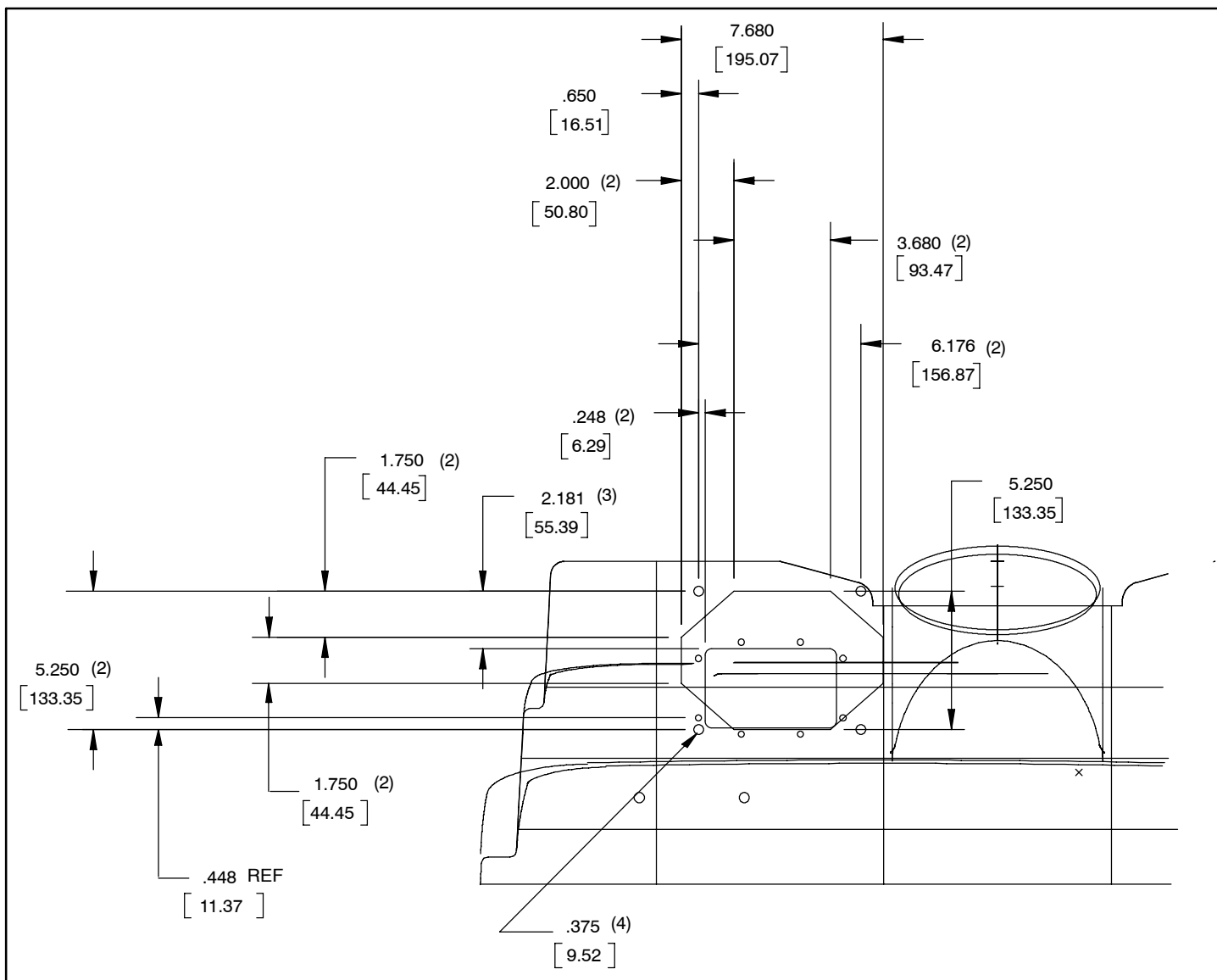


FIG. 2 - HOPPER COVER REWORK

VACUUM WAND INSTALLATION:

1. Use a hex screw (12), two washers (14), and a jam nut (13) to install the knob (11) onto the wand tube (6). Hand tighten hardware. Refer to Fig. 3.

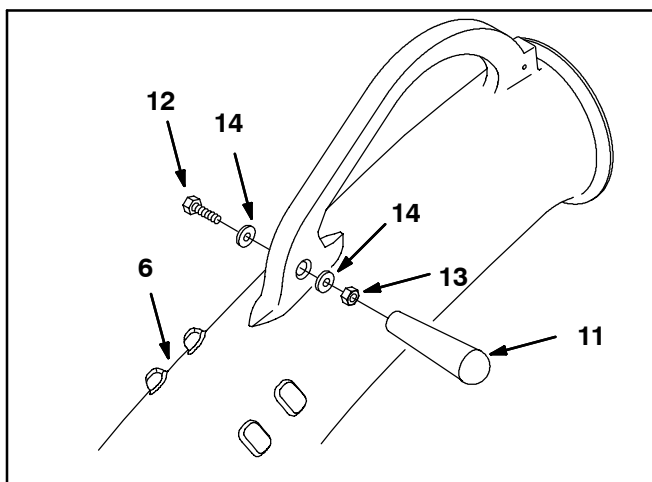


FIG. 3

2. Use two hex nuts (26), two washers (19), and two hex screws (25) to install the bent plate (22), wand bracket (23), and wand strap (21) onto the right side panel. Hand tighten hardware. Refer to Fig. 4.

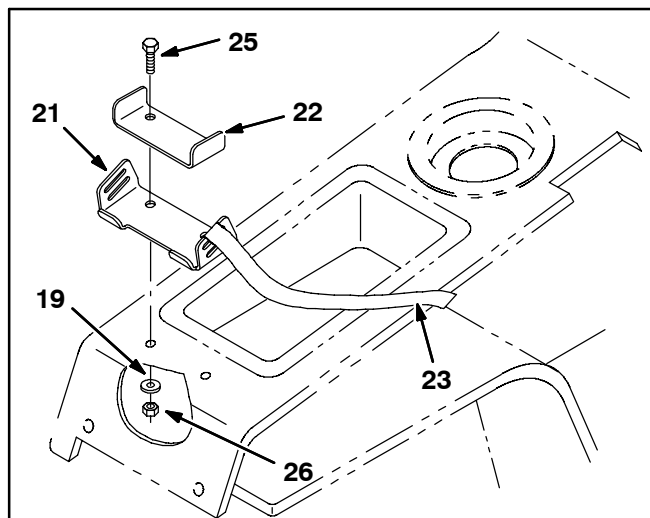


FIG. 4

3. Remove the two plastic plugs from the right side panel and use hex screw (25), hex screw (24), three washers (8), and a hex nut (20) to install the upper wand tube (15) and flat plate (16) onto the right side panel. Refer to Fig. 4.

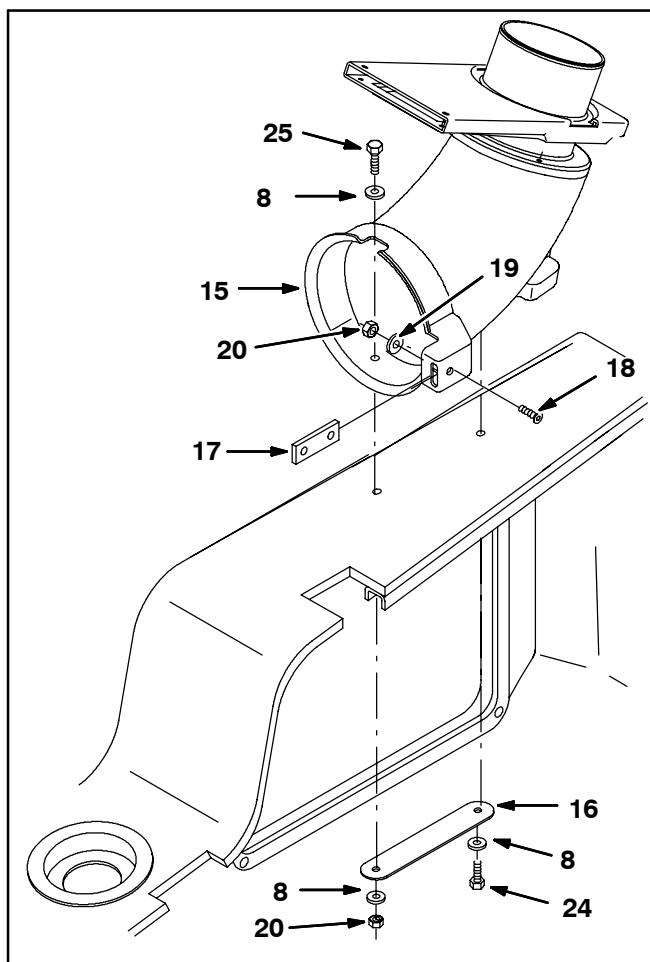


FIG. 5

4. Use a flat screw (18), washer (19), and hex nut (20) to install the mounting plate (17) onto the upper wand tube (15). Hand tighten hardware. Refer to Fig 5.

5. Drill a 17/64 in. hole through the hole in the mounting plate and into the right leg of the overhead guard. Refer to Fig. 6.

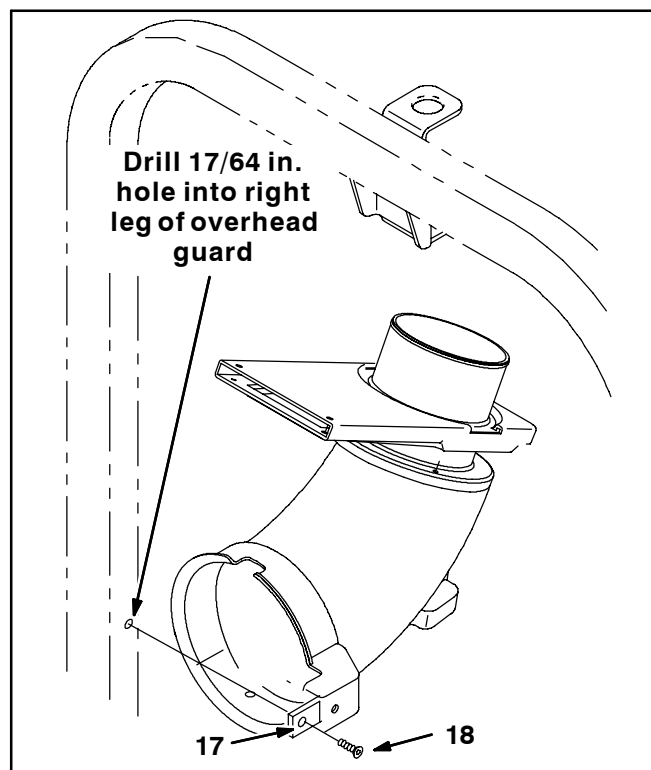


FIG. 6

6. Use a flat screw (18) to install the mount plate (17) in the upper wand tube (15) onto the leg. Hand tighten hardware. Refer to Fig. 6.
7. Install the valve seal (28) onto the slide plate (27). Refer to Fig. 7.

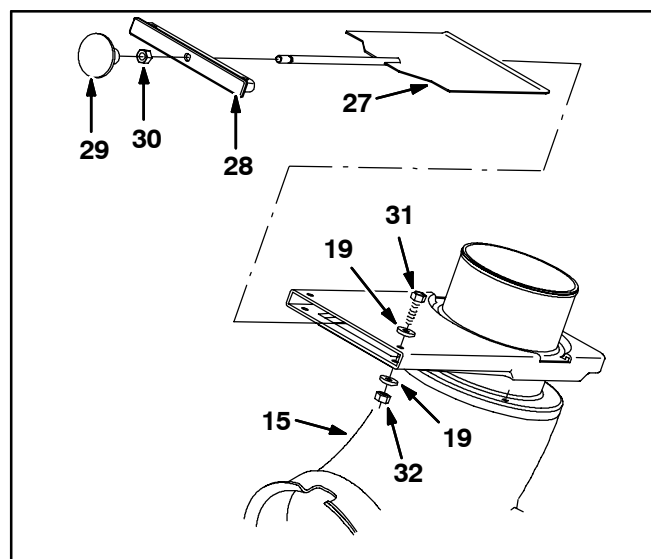


FIG. 7

8. Install the jam nut (30) and push-pull knob (29) onto the slide plate (27). Hand tighten. Refer to Fig. 7.

9. Install items assembled in the previous two steps into the upper wand tube (15). Install two hex screws (31), eight washers (19), and two hex nuts (32) to hold the assembly into the upper wand tube. Hand tighten hardware. Refer to Fig. 7.

10. Use a bridge clamp (36) to attach one end of the 204L vacuum hose (34) to the wand plate (33). Refer to Fig. 8.

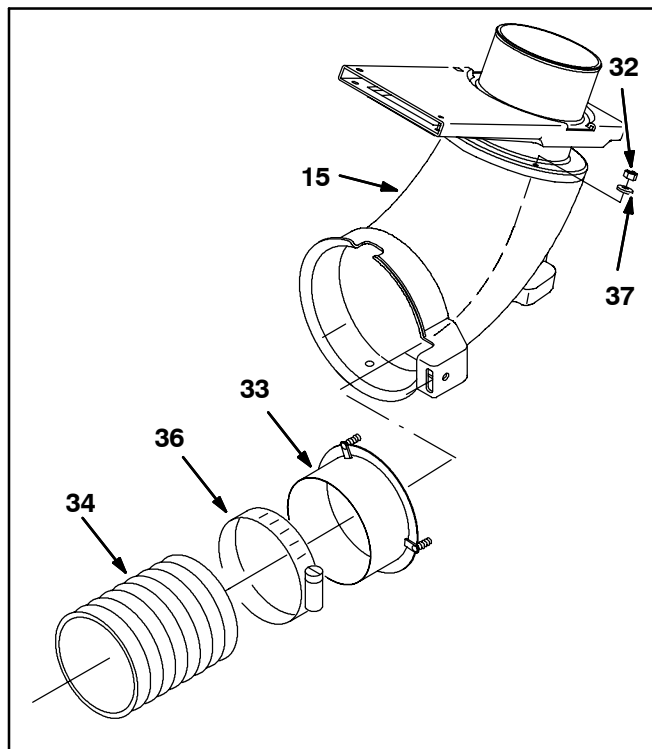


FIG. 8

11. Use three hex nuts (32) and three flat washers (37) to install the wand plate (3)-with the 204L hose (34) already installed-into the upper wand tube (15). Refer to Fig. 8.

12. Use four hex screws (3), washers (5), and hex nuts (4) to install the tube weldment (1) and foam gasket (2) over the hole in the hopper cover. Hand tighten hardware. Refer to Fig. 9.

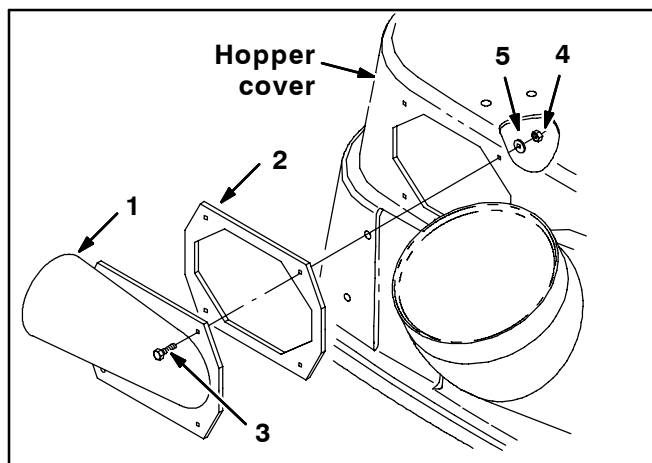


FIG. 9

13. Use a bridge clamp (36) to attach one end of the 15.8L vacuum hose (35) to the tube weldment (1). Refer to Fig. 10.

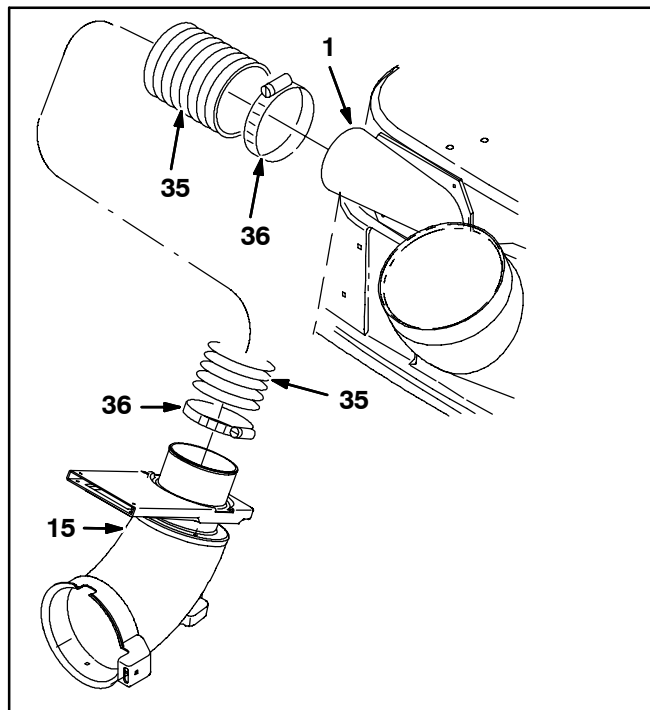


FIG. 10

14. Use a bridge clamp (36) to attach the other end of the 15.8L vacuum hose (35) to the upper wand tube (15). Refer to Fig. 10.

15. Use a bridge clamp (36) to attach the other end of the 204L vacuum hose (34) to the wand tube (6). Refer to Fig. 11.

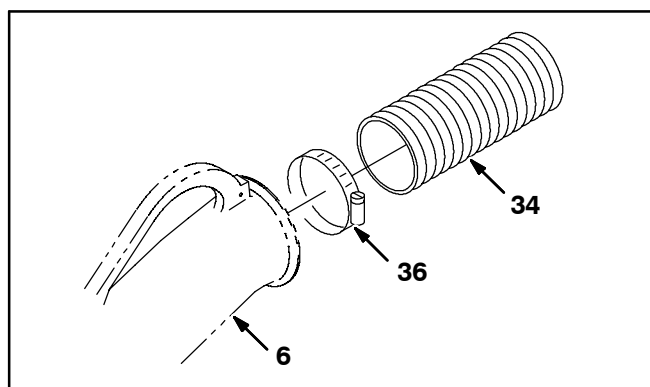


FIG. 11

16. Use three hex screws (10), six washers (8), and three hex nut (9) to install the floor tube (7) onto the wand tube (6). Refer to Fig. 12.

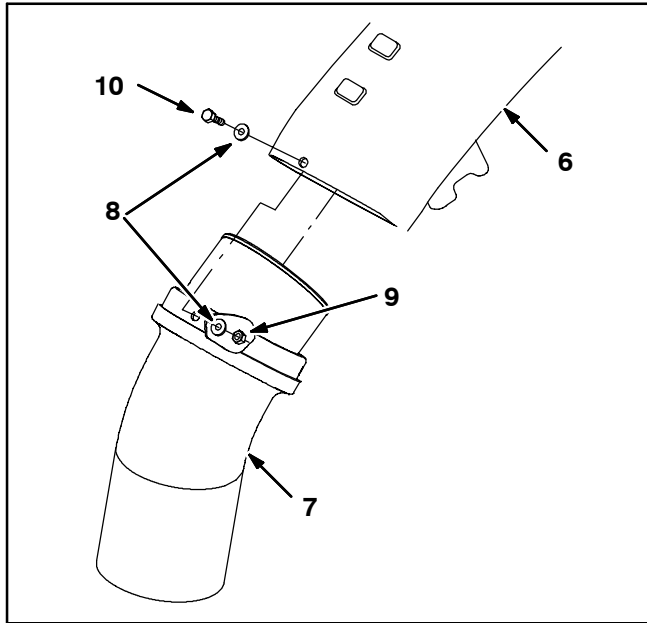


FIG. 12

17. Tighten all hardware left loose in the previous steps.

GATE VALVE INSTALLATION:

1. Disconnect the vacuum hoses from the vacuum tube. Set the hose clamps aside. Refer to Fig. 13.

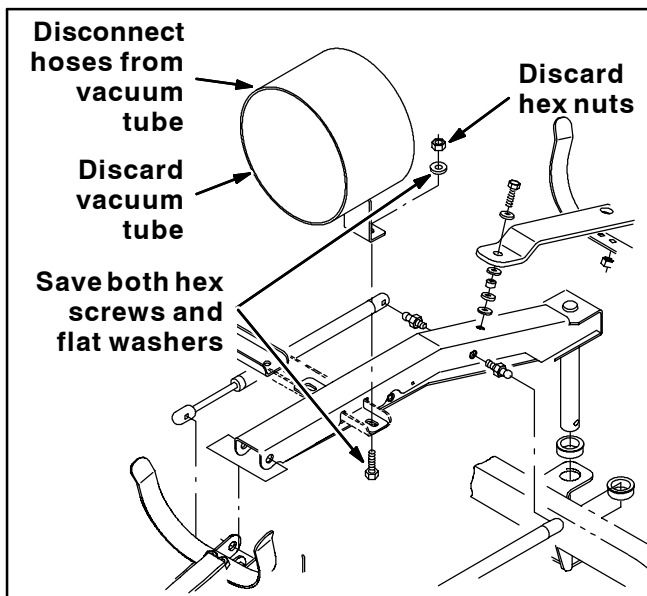


FIG. 13

2. Remove hardware holding the vacuum tube onto the rear vacuum support arm and remove the vacuum tube from the machine. Set all removed hardware aside. Discard the vacuum tube. Refer to Fig. 13.

3. Slide the valve seal (40) onto the valve plate (39) handle. Refer to Fig. 14.

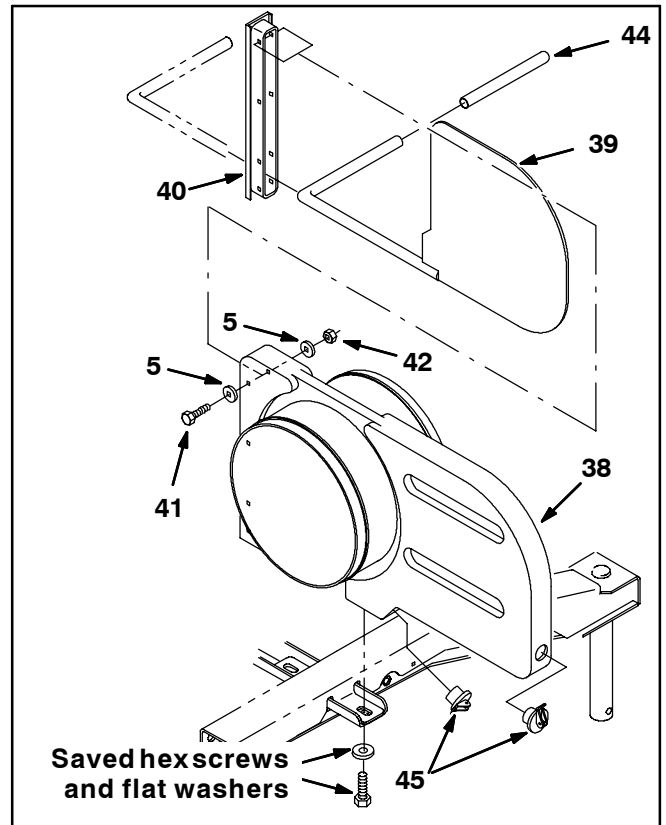


FIG. 14

4. Slide the valve plate (39) into the valve body (38) and use four hex screws (41), eight washers (5), and four hex nuts (42) to install the valve seal (40) onto the valve body. Be sure the valve plate handle points toward the right outside of the machine. Refer to Fig. 14.

5. Install the vinyl grip (44) onto the valve plate (39) handle. Refer to Fig. 14.

6. Install the expandable plugs (45) into the valve body (38). Refer to Fig. 14.

7. Use the two set aside hex screws and flat washers to install the valve body (38) onto the rear vacuum support arm. Refer to Fig. 14.

8. Use the saved hose clamps to install the hoses onto the valve body (38). Refer to Fig. 14.

9. Start the machine and turn on the vacuum fan.

10. Check the gate valve for proper operation. Slide the gate in and out to adjust main vacuum hose air flow.

11. The expandable plugs (45) allow access for cleaning the gate valve body (38). Periodically check gate valve body and plugs for proper operation.

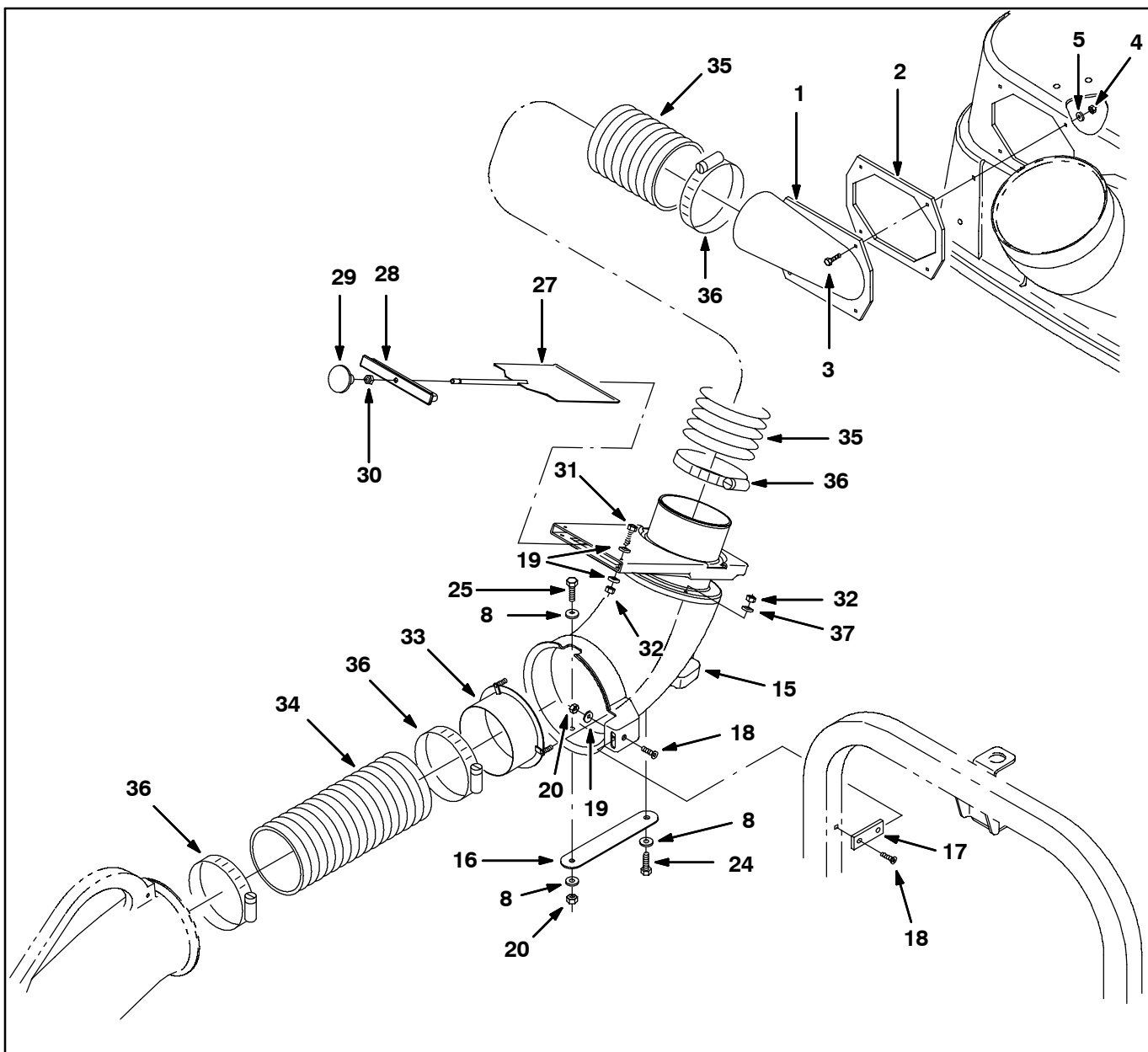


FIG. 15 - VACUUM WAND HOSE GROUP

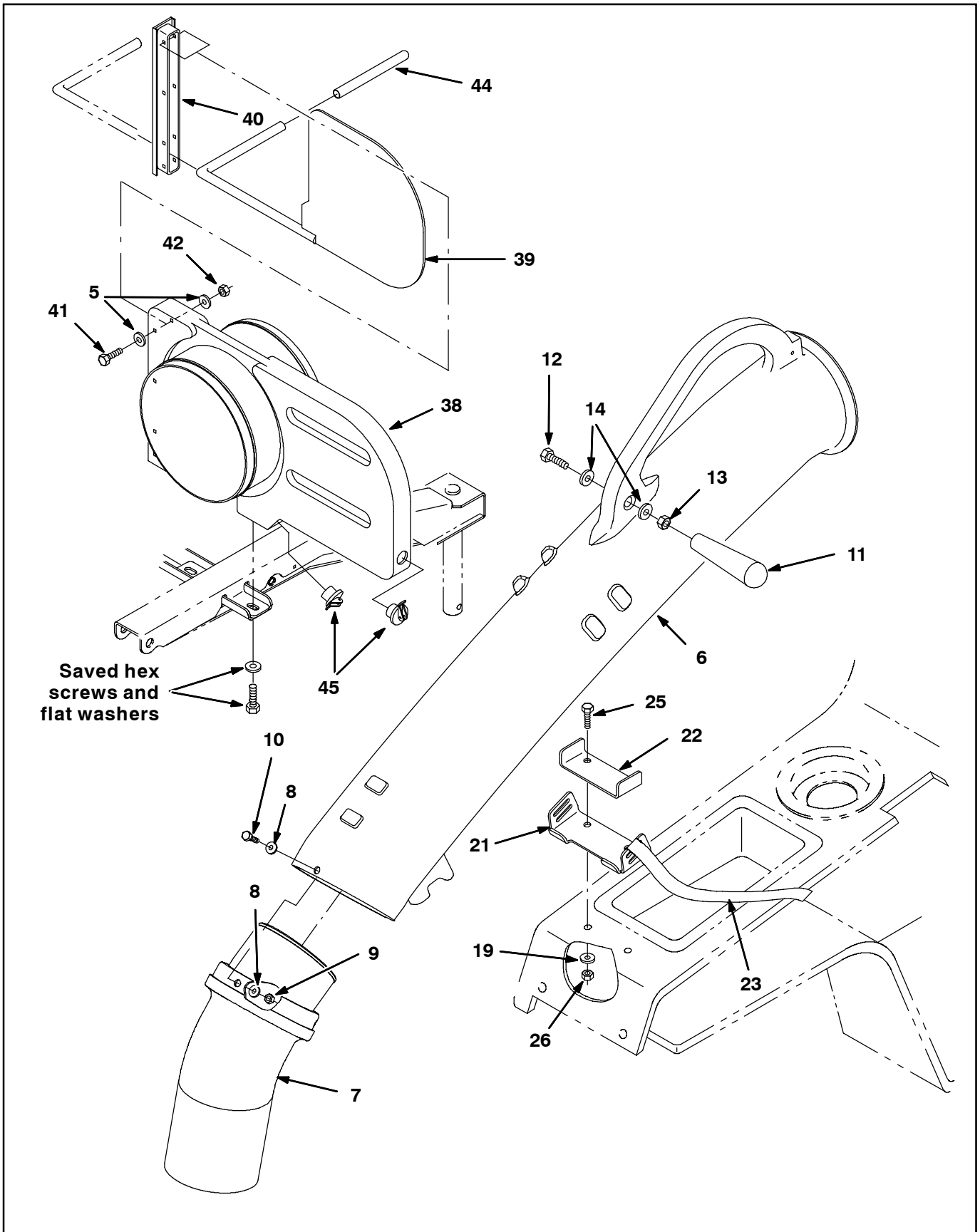


FIG. 16 - VACUUM WAND HANDLE GROUP

BILL OF MATERIALS FOR VAC WAND KIT 367557

Ref.	TENNANT Part No.	Description	Qty.
1	367966	Adaptor, tube	1
2	367967	Gasket, foam	1
3	09007	Screw, hex, M06 X 1.0 X 25, SS	4
4	08712	Nut, hex, lock, M06 X 1.0, NL, SS	4
5	01684	Washer, flt, .25 SS	16
6	368355	Tube, wand	1
7	368351	Tube, floor tool	1
8	01683	Washer, flt, #10 SS	6
9	06549	Nut, hex, lock, M05 X 0.8, NL	3
10	24199	Screw, hex, M05 X 0.8 X 16, SS	3
11	367554	Knob	1
12	59159	Screw, hex, .38-16 X 1.75, SS	1
13	01692	Nut, hex, std, .38-16, SS	1
14	01686	Washer, flt, .38 SS	2
15	368356	Tube, wand, upper	1
16	368448	Plate, flat	1
17	367971	Plate, mtg	1
18	32129	Screw, flat, M08 X 1.25 X 20. 10.9	2
19	01685	Washer, flat, .31 SS	8
20	08713	Nut, hex, lock, M08 X 1.25, NL, SS	2
21	367785	Plate, mtg	1
22	368041	Bracket, wand	1
23	367974	Strap, wand	1
24	12273	Screw, hex, M8 X 1.25 X 20, SS, NL	1
25	09010	Screw, hex, M08 X 1.25 X 25, SS	3
26	08713	Nut, hex, lock, M08 X 1.25, NL, SS	2
27	367959	Plate, valve	1
28	367705	Seal, valve	1
29	367553	Knob, push/pull	1
30	01691	Nut, hex, std, .31-18, SS	1
31	33930	Screw, hex, M06 X 1.0 X 40, SS	2
32	08712	Nut, hex, lock, M06 X 1.0, NL	5
33	367493	Plate, wand	1
34	367719	Hose, flex, vacuum, 5.5D, 204.0L	1
35	367720	Hose, flex, vacuum, 5.0D, 15.8L	1
36	367718	Clamp, bridge, 5.0	4
37	01683	Washer, flat, #10 SS	3
38	368155	Valve, body	1
39	368196	Plate, wldt, valve	1
40	368208	Seal, valve, 8.0	1
41	06947	Screw, hex, M06 X 1.0 X 40, 8.8	4
42	08708	Nut, hex, lock, M06 X 1.0, NL	4
43	16484	Gasket	8
44	382291	Grip, vinyl	1
45	01495	Plug, expandable	2

TENNANT COMPANY
P. O. Box 1452
Minneapolis, MN 55440-1452